

Power Consumption Monitoring in ITIM Datacenter

Mihail Radu Cătălin Trușcă¹,

Ș. Albert¹, F. Fărcaș¹, M.L. Soran¹, M. Abrudean²

¹*National Institute for Research & Development of Isotopic and
Molecular Technologies, e-mail: radu.trusca@itim-cj.ro*

²*Technical University of Cluj-Napoca,
Cluj-Napoca, Romania*

Aim of work

The temperature monitoring and the possibilities to reduce the power consumption in Datacenter

Developping additional methods to monitor the operation of air conditioning equipments to prevent some damages that could occur in the cooling system, possible intervention can be so much faster and avoid the appearance of the defects.

We need the monitoring system for our Datacenter that's include a Grid site **RO-14-ITIM**, a MPI Cluster, database servers and the network communication system

Research teams in INCDTIM



- Physics of multifunctional nanostructure systems
- Isotope separation and labeled compounds
- Mass spectrometry, chromatography and ion physics
 - High-Tech Engineering in ATLAS experiment at LHC Cern Geneva
- Molecular and Biomolecular physics
 - Numerical Modeling
 - Structural Analysis in Solids
 - Self-Assembled Molecular and Biomolecular Systems

INCDTIM Datacenter

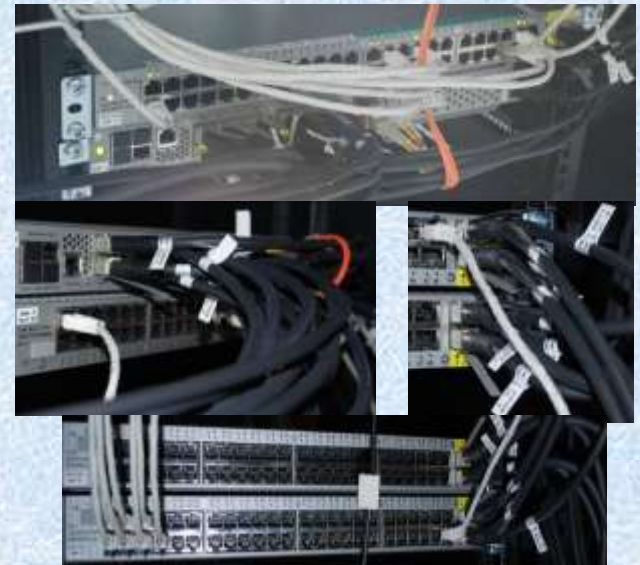


- Grid site **RO-14-ITIM**
 - **Core 250**, Storage capacity: 100 TB, Technology **1U + Blade** system (IBM & HP)
- **MPI Cluster**
 - **400 Core, 96 GB / Computer, 450 GB HDD**
- **Network Institute**
 - Database server
 - Communication Server
 - Full functional Cisco system



Network abilities

- **Switch Cisco 6509E**
- ITIM – RoEduNet **10 GB** from 1 Feb. 2011
- Nexus system
 - ~40 GB inside the Grid site
 - ~20 GB between Grid Site and Switch



Monitoring system

The user frequency in the range [0.1 ... 60] second of the three monitored parameters for each component on controlled system.

The followed parameters:

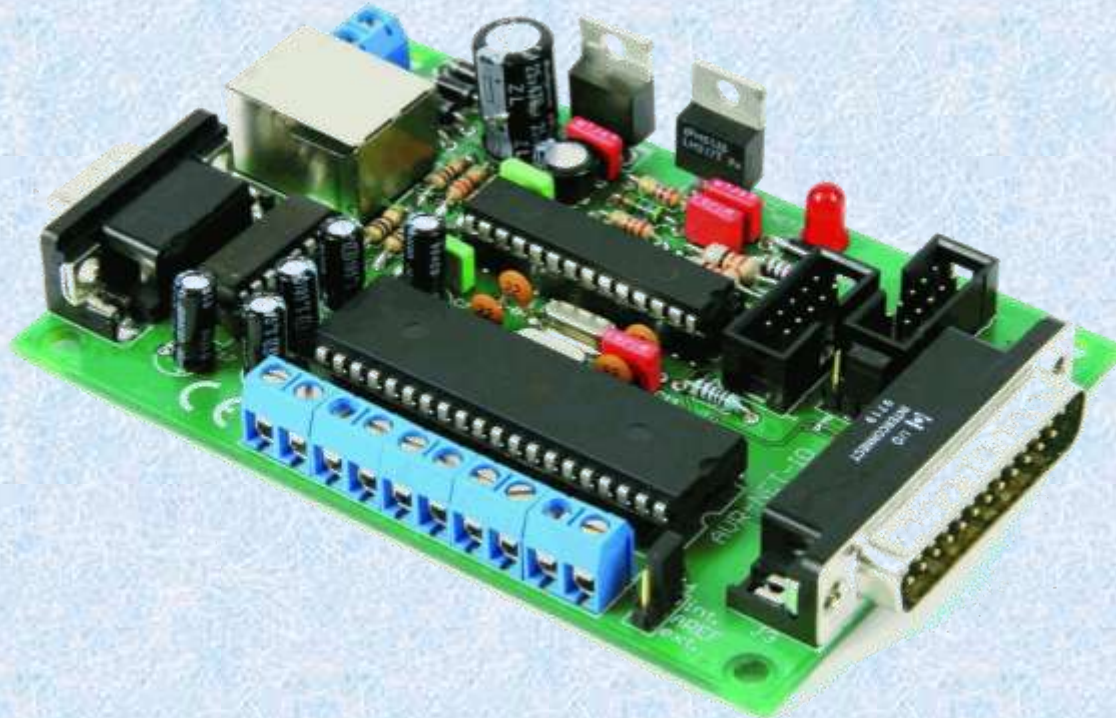
- voltage power supply of the cooling units;
- temperature of the heat transfer of heat exchange circuit;
- state of rotation of the main outside fans that serves the unit, with their propeller motion detection.

“Hardware” part

An electronic board with its "firmware" called "AVR_NET_IO"

A microcontroller ATmega32 type and completed with an adaptation electronic circuit needed to connect sensors.

Development board with eight digital outputs, four digital inputs and four analog inputs.



AVR_NET_IO electronic board

“Software” part

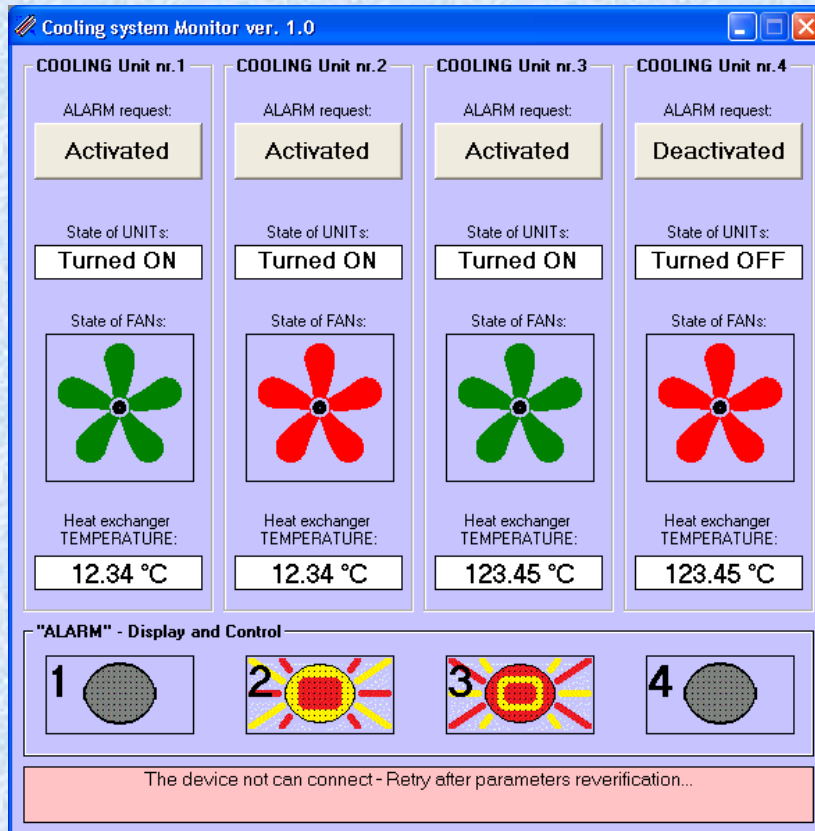
The virtual device is implemented in software, with a graphic interface, designed to:

- read the watched parameters values
- generates an alarm in case it is identified this need.
- simulates the operation of warning lights panel on the display,
- implements 2 mechanism: an abort command or trigger an alarm by authorized users.

Development board communicates with a computer by Ethernet connection

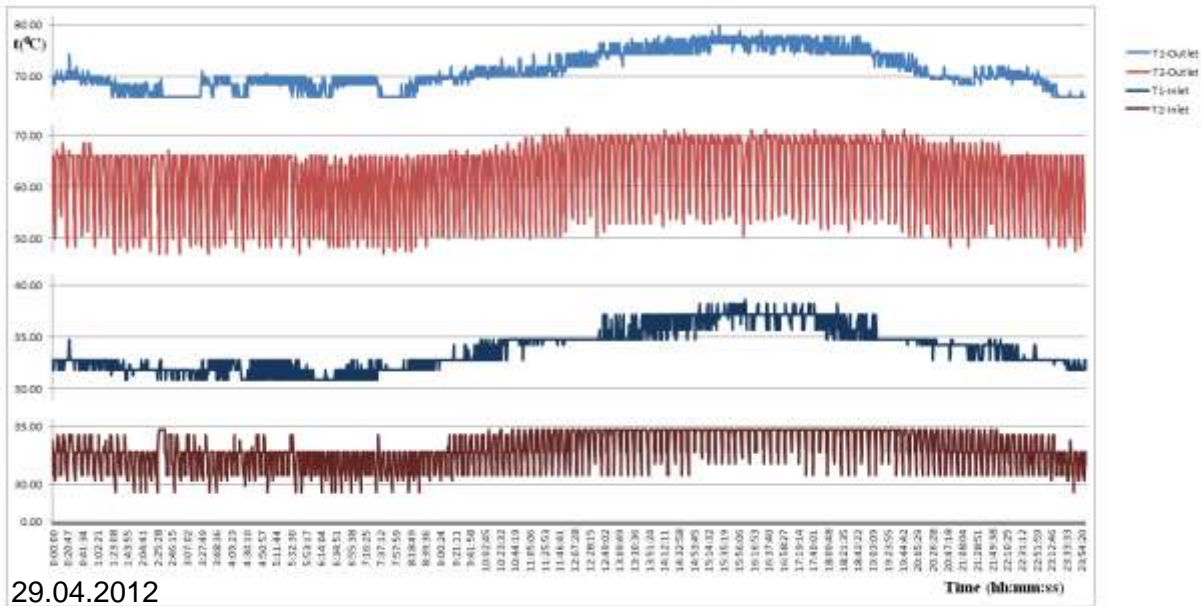
The program:

- generates commands for data acquisition from sensors attached;
- control execution device that relays control panel display or digital multiplexer.



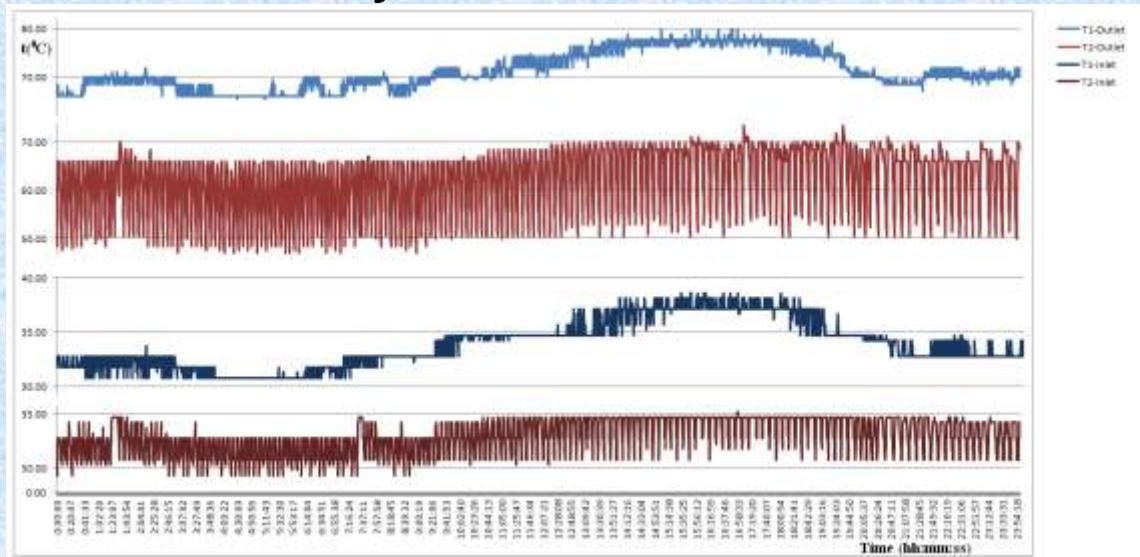
Graphic interface

Temperature monitoring

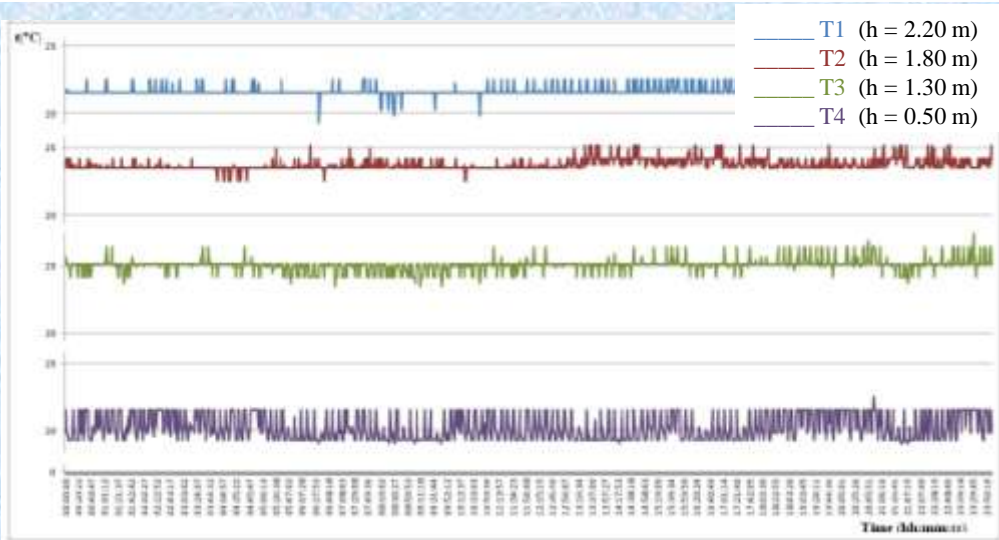
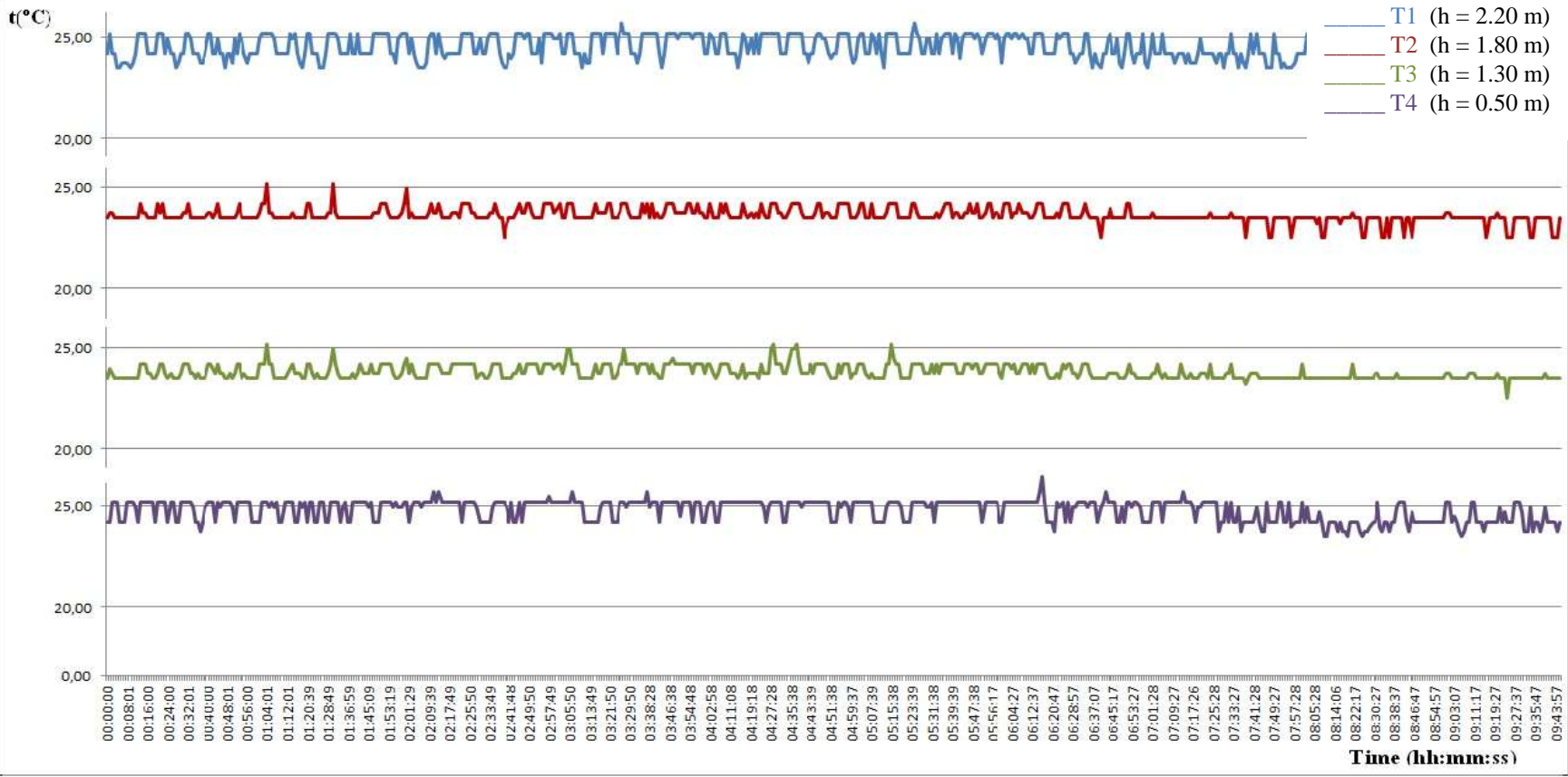


29.04.2012

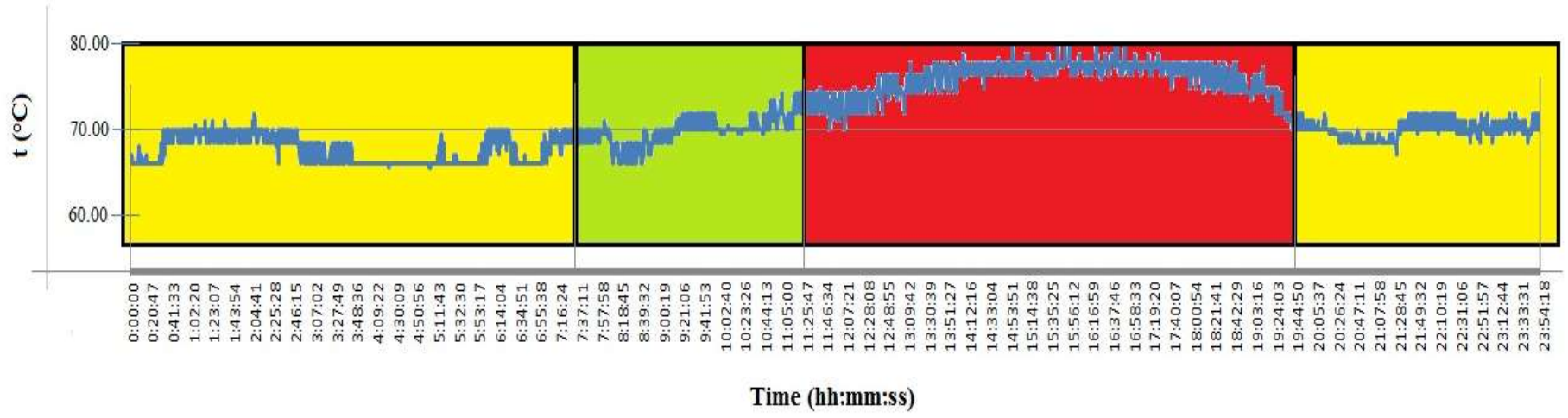
Refrigerant temperature at the inlet and outlet of the cooling unit, in two different days



30.04.2012



Ambient temperature variation in Datacenter



Colour legends: Zone - I Zone - II Zone - III

Test periods for reducing energy consumption

CONCLUSIONS

- The parameters controlled by complex automation system, will be adjusted to acceptable values while working even for relatively short periods of time. It is possible to detect the problems in the functioning of the cooling devices, with at least 10 minutes before recording by automatic fault protection thereof.
- The alarm starts when the temperature is with minimum 3°C above or below to established working range or / and fan damage.
- Detect situations where the system works with some of the parameters changed significantly from the normal will help to easier system maintenance and ensure improved safety in operation.

- Refrigerant temperature increase especially at the outlet of the cooling unit, during normal working hours, when multiple tasks are launched.
- In order to reduce the energy consumption we stop some air conditioning systems or some computers and follow the variation of temperature at different times of day.
- These intervals were set so that the economy is high, but the work's Datacenter is not disturbed.

ACKNOWLEDGEMENTS

This work is supported by the Romanian Research and Development Agency through EU12/2009, EU15/2009, TE-76/2011 projects, and the development of the datacenter monitoring capabilities

Thank you for your attention !

