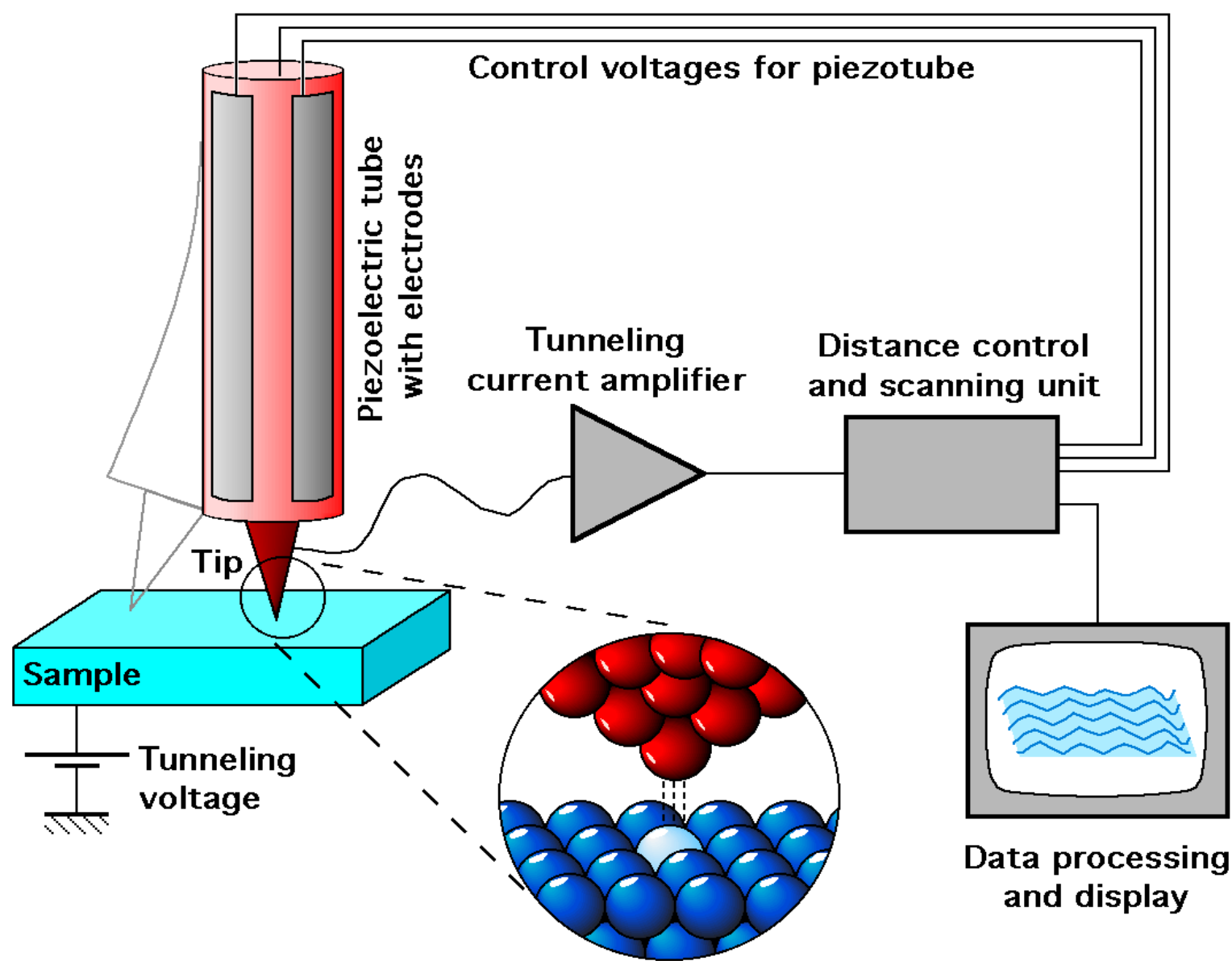
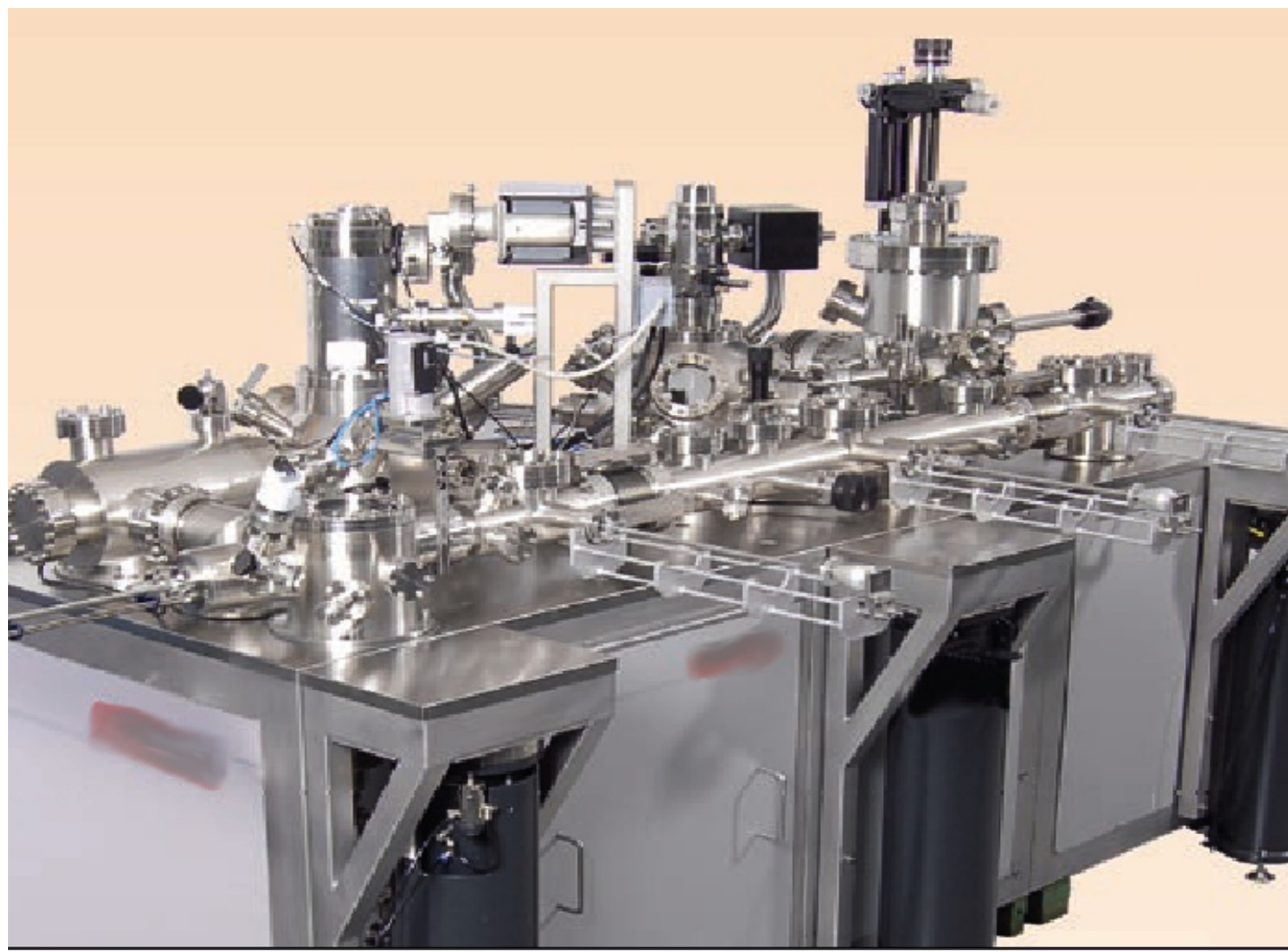


Microscop cu efect tunel

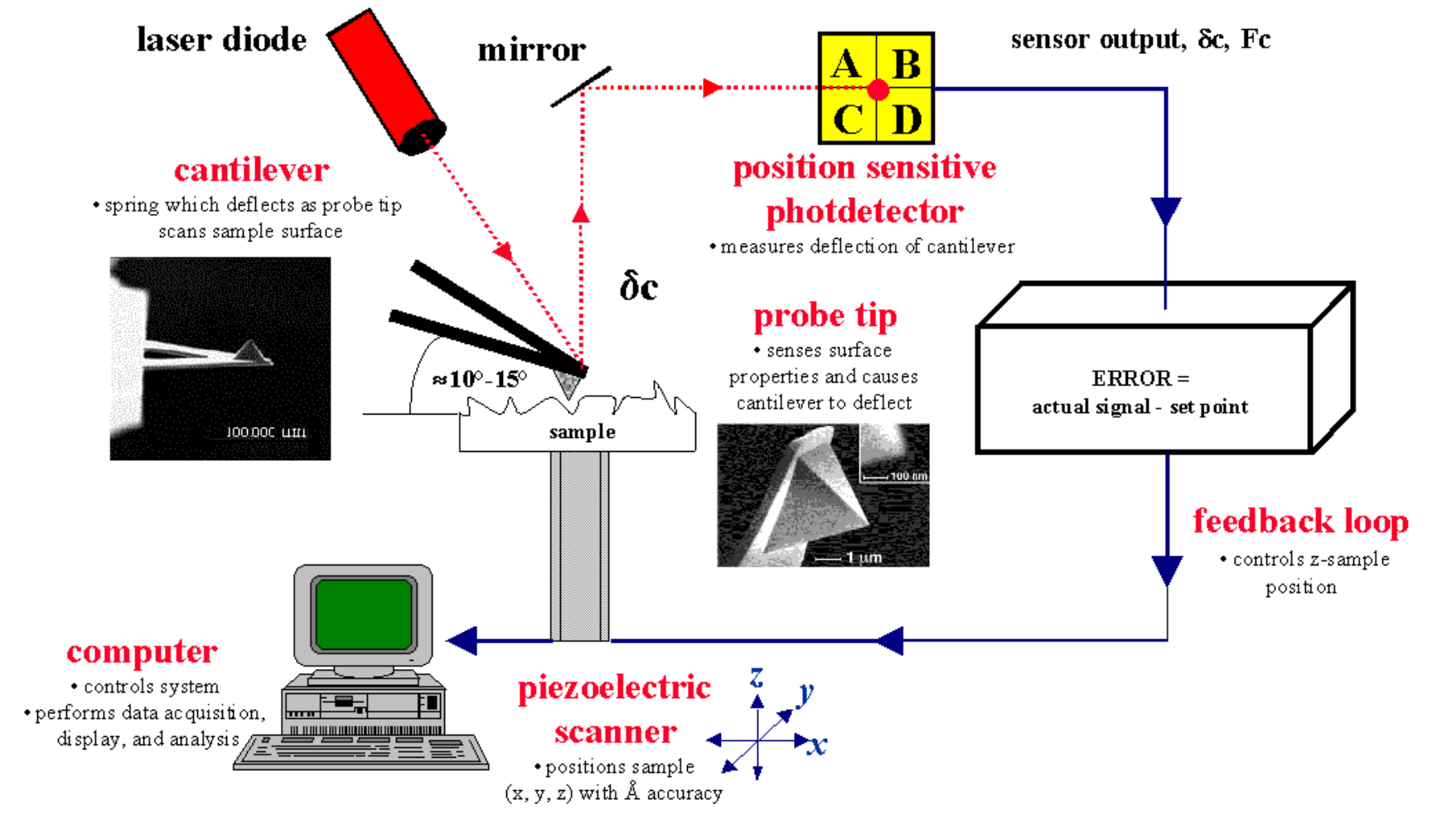


Schema de functionare a unui STM (sus)  
Vedere de ansablu a microscopului (jos)

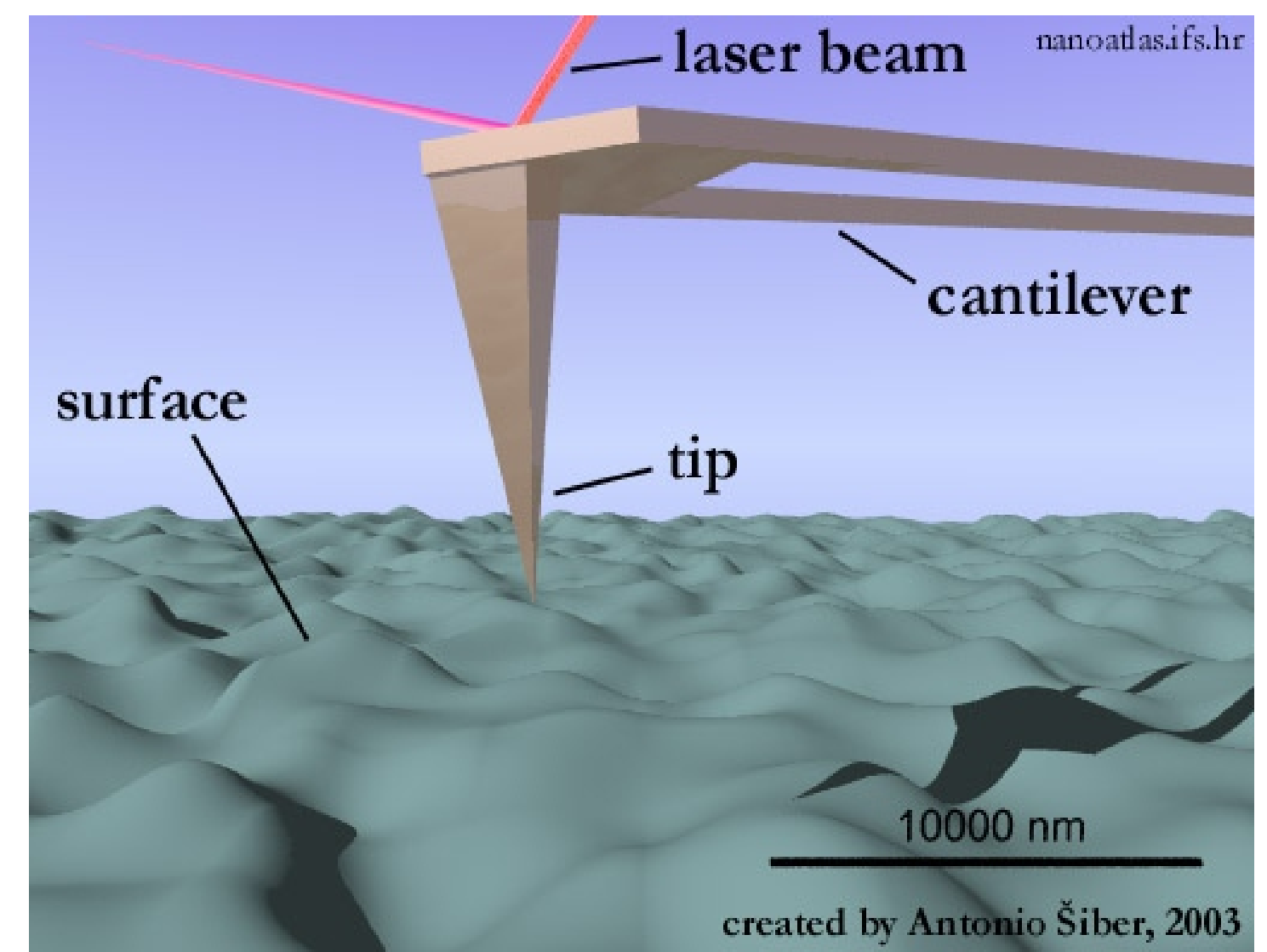


Microscop de forta atomica

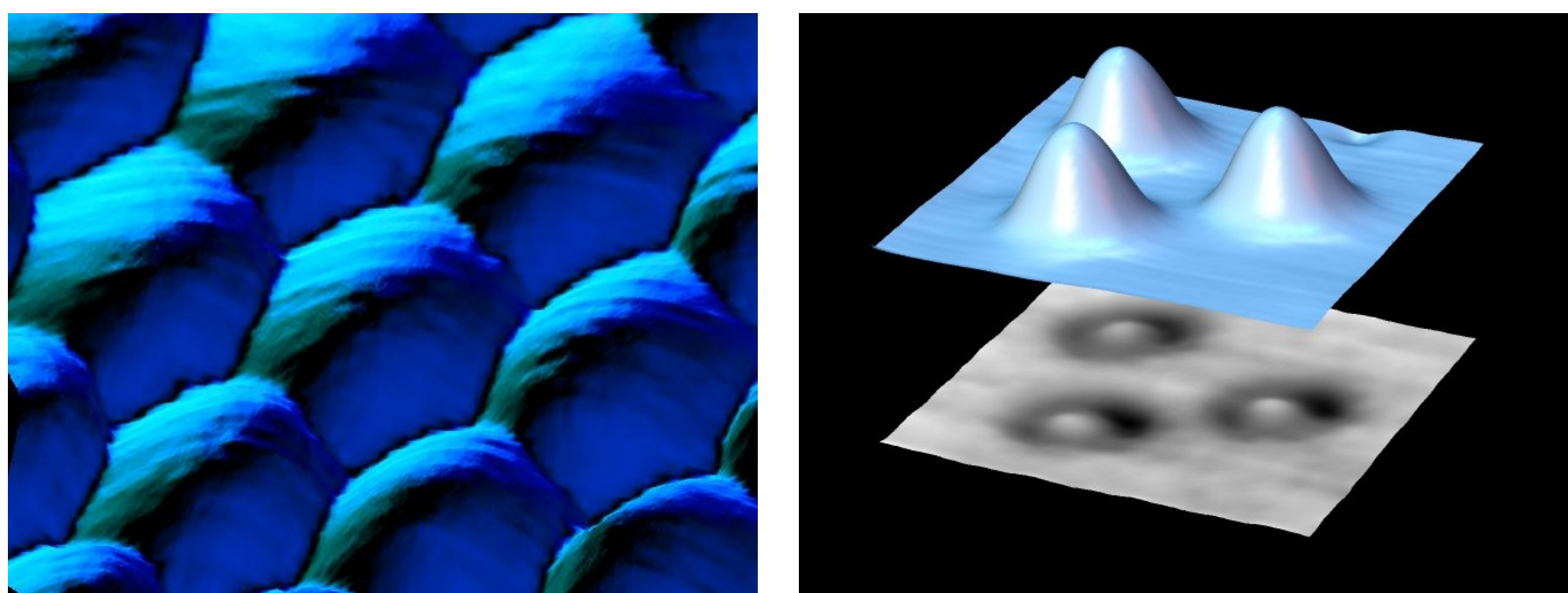
Atomic Force Microscopy (AFM) :  
General Components and Their Functions



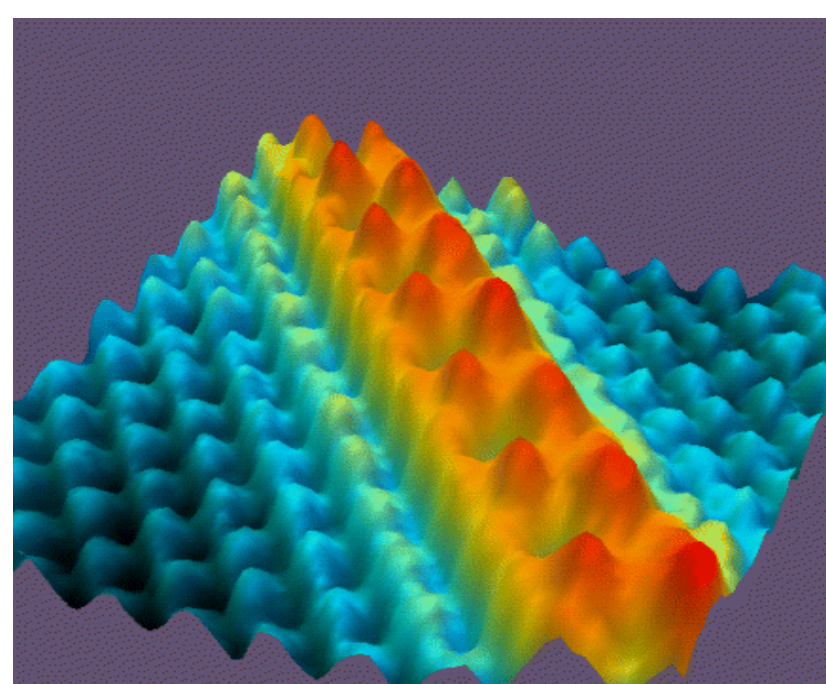
Schema de functionare a unui AFM (sus)  
Detaliu: scanarea unei suprafete (jos)



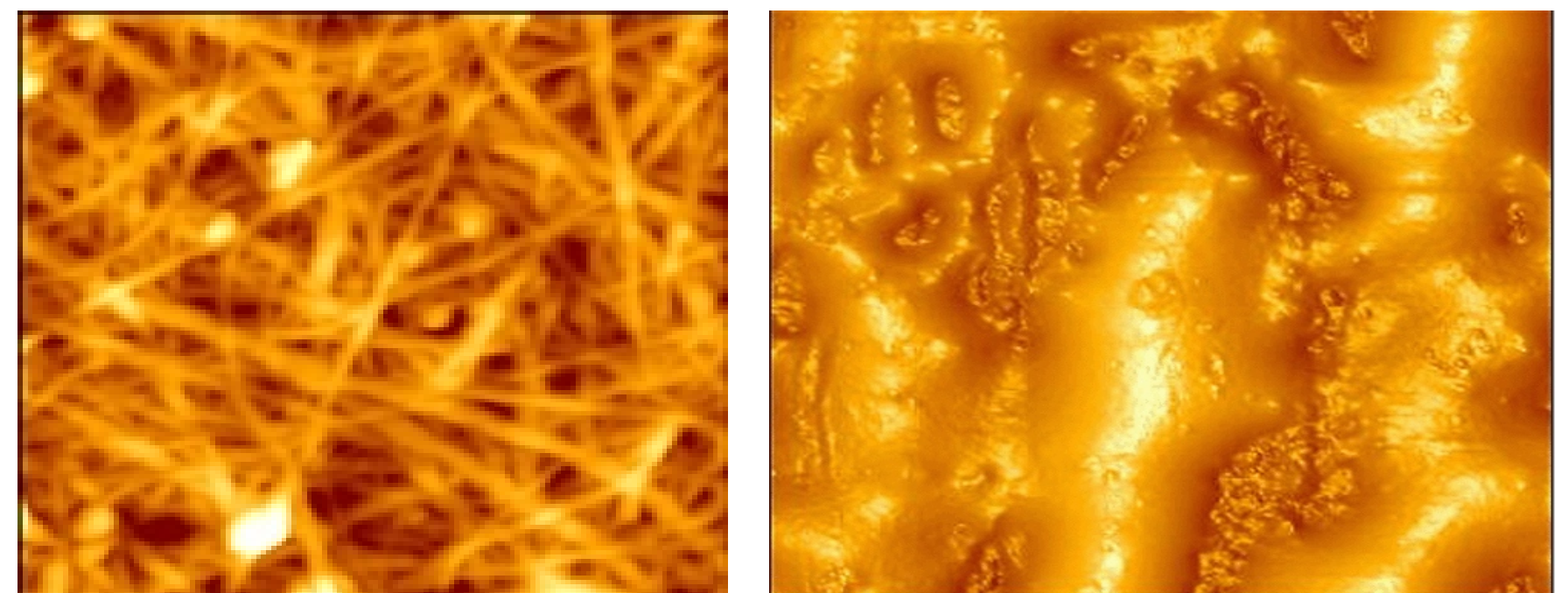
Imagini STM



Suprafata de Pt(111) (sus)  
Densitate de stari a atomilor de Gd masurata cu STM (sus-dreapta)  
Lant de atomi de Gd depusi pe suprafata Cd(111)



Imagini AFM



Nanotuburi de carbon depuse pe suprafata de Ag(111) (sus)  
Hirtie (sus-dreapta)  
Fragmente de DNA depuse pe suprafata de Au (111) (dreapta)

